



ZW21601 TURBO CLEANER JOB AID

Technical Support: 800-255-8138, Option 4

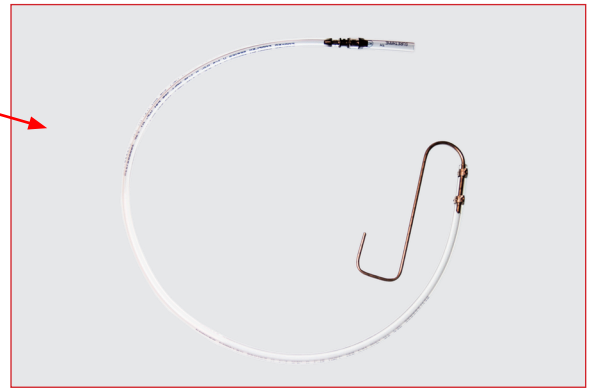
Safety Recommendations:

- Safety glasses and gloves should be worn during the service.
- Keep loose clothing and/or tools secured while engine is running.
- Use in well ventilated area.



Tool(s) Required:

- #TN75490 – Foam Throttle Body “S” Delivery Tool



Preparing the Vehicle:

- Loosen the retaining clamp from the turbo inlet boot closest to the turbo inlet side and then slide boot off to access the turbo.

NOTE: *If location is difficult to access, then loosen the retaining clamp at the air filter box.*

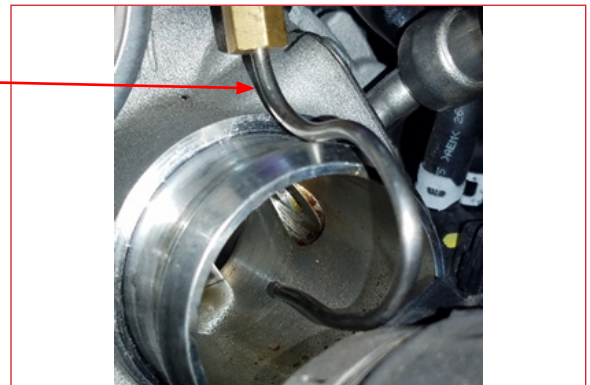


Preparing the Vehicle (continued):

- Insert Foam Throttle Body “S” Delivery Tool #TN75490 into the turbo inlet opening, making sure the nozzle faces the turbo impellers.

NOTE: *If using the air filter box location, make sure the nozzle is facing away from the air filter element and/or air mass sensor.*

- Reinstall turbo inlet boot back onto turbo inlet housing and tighten retaining clamp.






ZW21601 TURBO CLEANER JOB AID

Technical Support: 800-255-8138, Option 4

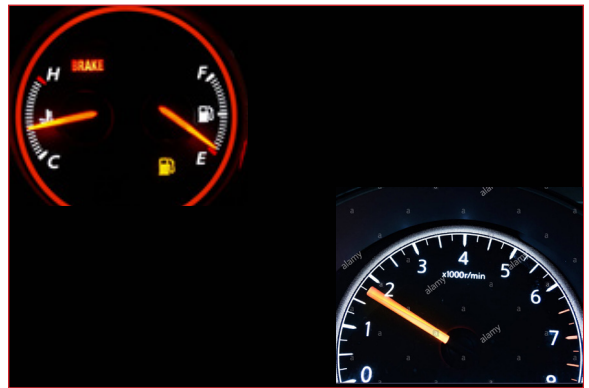
Preparing the Vehicle (continued):

- Insert open ended hose of Foam Throttle Body "S" Delivery Tool #TN75490 to Turbo Cleaner (#ZW21601) trigger. 
- For VOC compliance, Foam Throttle Body "S" Delivery Tool #TN75490 must be used as directed.




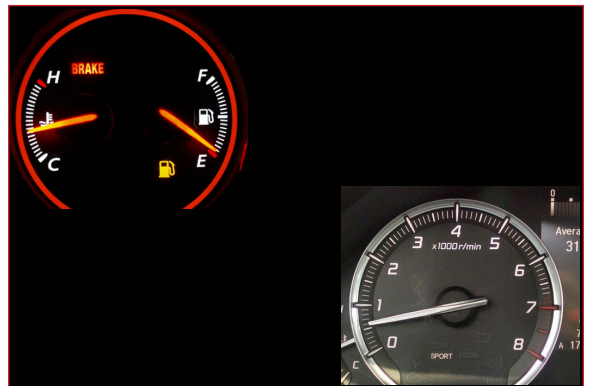
Performing the Service: GASOLINE ENGINES

- Start the engine and allow it to reach normal operating temperature.
- Increase engine RPM to 2,000 RPM, using a throttle depressor or other appropriate means.
- Spray Turbo Cleaner (#ZW21601) into the inlet side of the turbo in short bursts.
- After each spray burst, wait for the engine RPM to return to 2,000.



Performing the Service: DIESEL ENGINES

- Start the engine and allow it to reach normal operating temperature. 
- **DO NOT** increase RPM. Engine is to remain at idle.
- Spray the cleaner into the inlet side of the turbo in short bursts.
- If engine RPM increases do not apply more product until engine has returned to idle.



Performing the Service: (continued)

- Continue procedure until can is empty.
- Let engine idle for 3 minutes, then shut off.
- Remove Foam Throttle Body "S" Delivery Tool #TN75490 from turbo inlet boot or air filter box location. Reconnect and tighten retaining clamp.
- Start engine and take vehicle for a 5- to 10-mile road test.

NOTE: Do not exceed 3,000 RPM during road test.

- After road test let vehicle idle for another minute and reset any DTC if present.
- Recommended service interval is every 15K miles, but may vary based on driving conditions.

